



॥ संस्कार संकुलन ॥

*Kanchangiri*

A GATEWAY TO  
THE *Luxe* LIFE



INTRODUCING

# THE *Luxe* LIFE

Kanchangiri presents to you a lifestyle that is hued with the tones of spirituality as much as it's designed to give the all-encompassing experience of luxury. It takes you to heights that connects you with the more luxurious, profound peace, and a serene spiritual experience that helps you to truly shine from within.

---

Luxurious **2, 3, & 4 BED** Homes with Deck



It's your sign to shift to  
a *Luxurious Lifestyle* now





*A Glorious View*  
that's only lived by a few







Converting your house to a home with  
*Unparalleled Joy*  
for your little ones





Come home to  
*Splendid Grandeur*



Gymnasium/  
Spa & Massage



Toddler  
Zone



Waiting  
Lounge



Grand Entrance  
Lobby



Kids Play  
Area



Business  
Center



Multipurpose  
Court



Indoor  
Games



Card  
Room



Senior Citizen  
Seating Area



Ramp Podium  
Parking



Banquet  
Hall



# Live the *Uncompromised Luxury*



Yoga/  
Meditation Area



Vertical  
Garden



Walking  
Track



Zen  
Garden



Party  
Lounge



Gazebo  
Seating



BBQ  
Corner



Chit Chat  
Corner







The feeling at the top has been  
*Redefined with Top-level Indulgences.*



# Typical Floor Plan

1<sup>st</sup> to 12<sup>th</sup> Floors

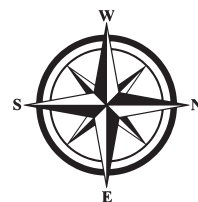


## RERA CARPET STATEMENT - WING B

S.NO.	DESCRIPTION	AREA
1	3 BHK	1188 Sq.ft
3	3 BHK	1165 Sq.ft
4	2 BHK	784 Sq.ft

## RERA CARPET STATEMENT - WING A

S.NO.	DESCRIPTION	AREA
1	3 BHK	1240 Sq.ft
2	4 BHK	1565 Sq.ft
3	2 BHK	770 Sq.ft



# Typical Floor Plan

13<sup>th</sup> to 15<sup>th</sup> Floors



## RERA CARPET STATEMENT - WING B

S.NO.	DESCRIPTION	AREA
1	3 BHK	1238 Sq.ft
2	3 BHK	1210 Sq.ft
3	2 BHK	814 Sq.ft

## RERA CARPET STATEMENT - WING A

S.NO.	DESCRIPTION	AREA
1	3 BHK	1240 Sq.ft
2	4 BHK	1565 Sq.ft
3	2 BHK	803 Sq.ft





# Typical Floor Plan

17<sup>th</sup> & Above

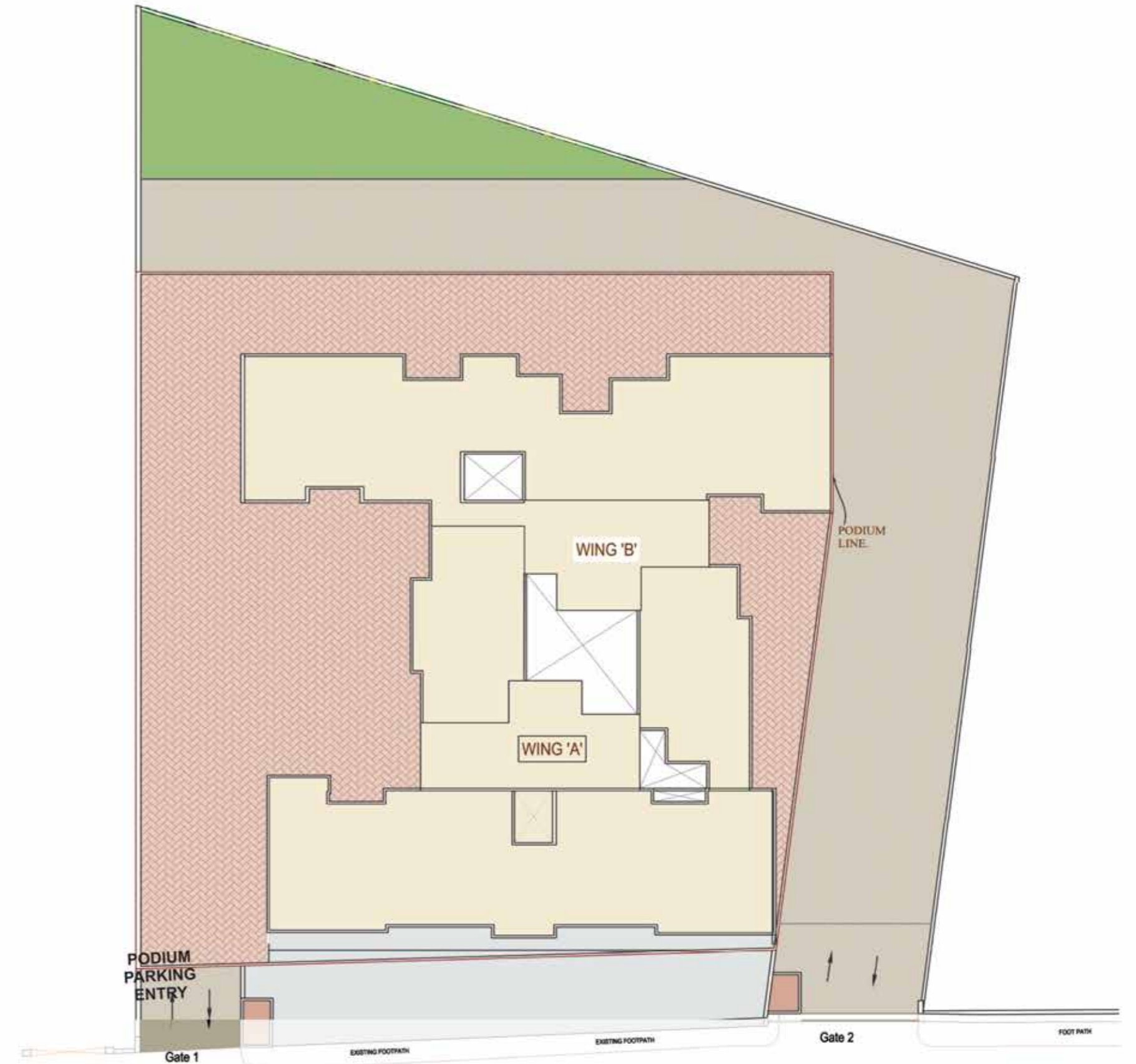


## RERA CARPET STATEMENT - WING B

S.NO.	DESCRIPTION	AREA
1	3 BHK WITH DECK	1287 Sq.ft
2	1 BHK WITH DECK	576 Sq.ft
3	3 BHK	1210 Sq.ft
4	2 BHK	814 Sq.ft

## RERA CARPET STATEMENT - WING A








S.NO.	DESCRIPTION	AREA
1	3 BHK WITH DECK	1294 Sq.ft
2	4 BHK WITH DECK	1626 Sq.ft
3	2 BHK	829 Sq.ft



18.30 M. W. CHAKRAVARTI ASHOK ROAD



# In the *heart* of the city...

-  Jain Derasar - 1 min
-  Akurli Metro Station - 5 mins
-  Kandivali Railway Station - 5 mins
-  Growel's Mall - 5 mins
-  Western Express Highway - 5 mins
-  S.V. Road - 3 mins
-  Children's Academy School - 3 mins
-  Colleges & Institutions - 10 mins
-  Hospitals - 3 mins
-  Thakur Village & Thakur Complex - 15 mins
-  Sanjay Gandhi national Park - 15 mins
-  Banks - 2 mins
-  Eateries - 5 mins





# Spacious Apartments for the splendid you

When life gives you a chance of seeking a home, make sure it is spacious. We make sure of your needs and turn them back to you with a mixture of relevancy infused with abundant luxury. Spaces so grand that has spots for rejuvenation and spaces for admiration. From the privacy of your own space to the privilege of vast spaces inside your home, Kanchangiri will provide you with the best of both worlds.

## FLAT AMENITIES

- ▶ Vitrified tiles / Equivalent other flooring
- ▶ Premium CP & Sanitary fittings
- ▶ Anodized aluminium glass windows
- ▶ Designer main door with high quality fittings
- ▶ Designer tiles in bathrooms
- ▶ Provision for A/C connection in living rooms & all bedrooms
- ▶ Washing machine & Aqua guard points in Kitchen
- ▶ TV, Telephone points in living room and in all bedrooms
- ▶ Designer kitchen tiles dado up to top of window



Artistic Impression





# GOODWILL

## BUILDERS

**CALL: 9538 222 685**

**Coporate Office:** 12-A, Yusuf Building, 1st Floor, 49, Veer Nariman Road, Fort, Mumbai - 400 023. | **Tel.:** +91 22 22049154 / 22044522 / 22044538



**MAHA RERA REGD. NO:** P51800009001 | **For Loan Facility:** HDFC Bank Approved No. 170740874

**Site Address:** Kanchangiri, CTS No 96-E, Village Wadhwan, Ashok Chakravarthy Road, Near Jain Temple, Kandivali (East), Mumbai - 400 101.

**Architect:** Nishit Sanghavi | **Planning Architect:** M/s. Planarch Associates | **R.C.C. Consultant:** M/s. Mahimtura Consultants Pvt. Ltd. | **Legal Advisor:** M/s. Law Firm of Khonas

Disclosure: The Creative does not constitute an offer and/or acceptance and/or contact and/or Agreement and/or transaction and/or any intention thereof and/or a disclosure under any statue of any nature whatsoever. All Specifications, images, plans, designs, amenities, dimensions, elevation or any other information contained herein are a creative imagination and are for representative purposes only. The same may be subject to changes/revisions/ alteration in terms of approvals, orders, directions and/or regulations of the concerned/ relevant authorities, at developers will, and/or for compliance with laws/regulations in force from time to time. For Private circulation only. Condition Apply.





॥ संस्कार संकुलन ॥

*Kanchangiri*

A GATEWAY TO

THE *Luxe* LIFE